

Application Note

STANLEY[®]

Healthcare Solutions

Implementation options for Passport

The Passport™ system gives you the flexibility to adapt layout and functionality to the particular needs of your facility or department.

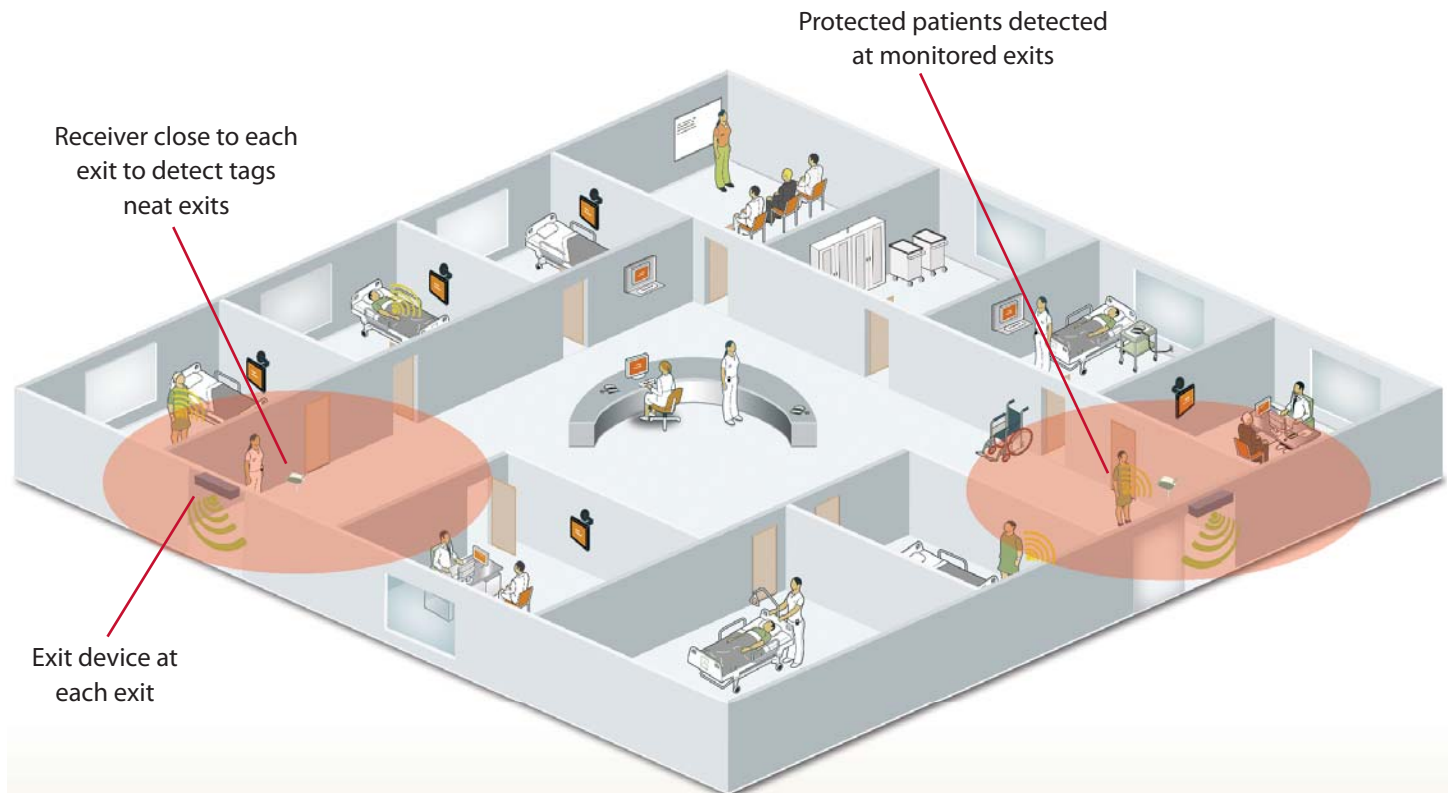
The Passport system provides protection to adult patients against wandering, elopement and discharge against medical advice. It offers different levels of performance based on the needs of the specific patient population being protected. As a facility-wide solution, the Passport system enables different levels of protection in different departments. Performance can also be upgraded at any time. This Application Note explains the options available.

Passport[™]
Patient Protection

Perimeter protection

This option monitors the exits from the protected area to detect when a patient wearing a Passport tag attempts to leave without staff authorization. This option is appropriate for patient populations unlikely to try to remove the tag, or lacking the physical strength to successfully remove it if they do try.

Perimeter protection is the most economical option, as it requires only the minimum number of receiver devices to detect messages from tags when at an exit.



STANLEY[®]

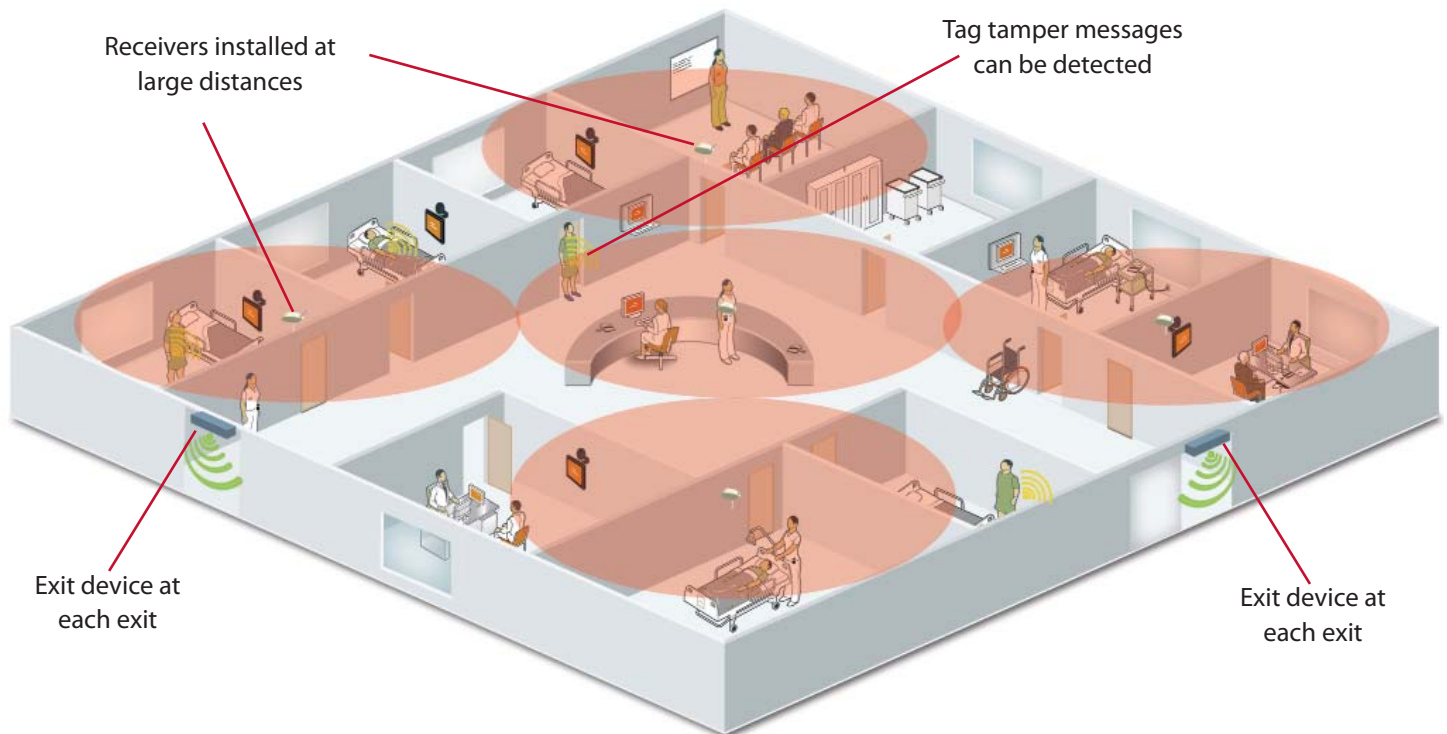
Healthcare Solutions

309 Legget Drive, Ottawa, ON K2K 3A3, Canada Toll free: 877-494-2528 Tel: +1 (613) 287-4553 Fax: (613) 592-4296 Web: www.stanleyhealthcare.com

© 2011 Stanley Healthcare Solutions. All Rights Reserved. December 2011. MK50184 Rev 01.

Tag removal detection

The next step up in protection is to deploy sufficient receivers to detect tamper messages from Passport tags when they are removed without authorization. This immediately results in an alarm in the system software identifying the patient. This option should be seriously considered if patients or their accomplices have the motivation and ability to remove the tag. While the tag does provide a physical barrier to removal, it will not prevent removal.



Full patient supervision & locating

The most comprehensive protection is provided by full supervision, with receivers installed at regular intervals throughout the protected area to both detect tag tampering and monitor the regular status messages from the tag; if no status messages are received for a configurable period, the system will generate an alarm.

This level of performance provides a measure of security against a knowledgeable individual who attempts to defeat the system by masking the signals from the tag (for example, by wrapping the tag in metal foil). With full patient supervision, you will know within a matter of minutes that the patient tag is no longer being seen by the system.

In addition, this installation makes it possible to locate patients at any time, to aid with patient management and workflow.

