

Data Sheet:

# SpaceTRAX Interface Options

Streamline your Clinical Inventory Management Business Processes by Interfacing SpaceTRAX to your Organization's Ecosystem.

## Product Description

SpaceTRAX is an advanced clinical inventory system designed for procedural areas that helps to manage inventory items by using barcode and RFID technology. SpaceTRAX is a HIPAA-compliant web-based Software-as-a-Service platform. The SpaceTRAX standard interface options enable system-agnostic upstream and downstream integrations with a wide variety of Health Information Systems, thereby streamlining operations, minimizing manual data entry, promoting staff compliance and increasing efficiency.

## Item Synchronization

The Item Synchronization interface is an inbound interface enabling the synchronization of item attributes such as cost, with any item master (Material Management/ERP) system.



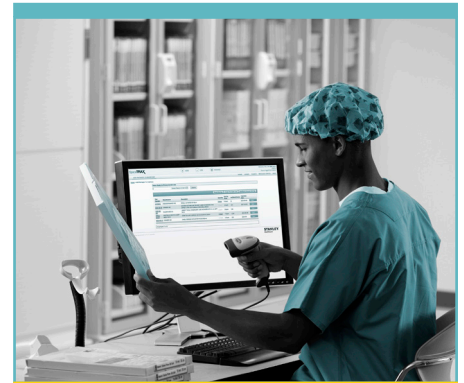
- Base data elements (configurable): part number, manufacturer, UOM, cost, custom item attributes
- Configurable overwrite options and synchronization logic

## Patient Registration (ADT)

The Patient Registration (ADT) interface is an inbound interface enabling information from any patient registration/admit/discharge or transfer management system to be sent to SpaceTRAX. A SpaceTRAX user can then search for and select patients from the SpaceTRAX user interface. Clinical staff can also submit the used inventory through the Billing interface to the facility's enterprise billing system.



- Security requirements: HIPAA, VPN, Data Encryption
- Base data elements (configurable):
  - » Patient: name, MRN, gender, date of birth, status
  - » Case: case number, start date & time, primary physician, procedures (multiple)
- Patient Registration (ADT) records are kept for use for a configurable number of days (7-30)
- Patient Registration (ADT) records can be configured and shared between multiple departments within the same facility, or exclusively to one department



## Specifications

### Middleware

- Microsoft BizTalk
- Standards-based, open platform, enables integration with virtually any other system

### Data Transport

- Transport types: File, SFTP, FTPS, FTP, SMTP, MLLP
- Formats: HL7, EDI, RQ500, XML, Flat file, Excel
- ePHI data transfer requires secured VPN from a customer data center to a SpaceTRAX hosting cluster

### Results and Logs

- Push to email

## Billing

The Billing interface is an outbound (scheduled or on-demand) interface that integrates cases/item usage, recorded in SpaceTRAX, to any enterprise billing system. The SpaceTRAX user triggers the interface by sending closed cases to billing.



- Security requirements: HIPAA, VPN, Data Encryption
- Base data elements (configurable):
  - » Patient: name, MRN, gender, date of birth, status
  - » Case: case number, start date & time, duration, primary physician, room, custom case billing attributes, procedures
  - » Used inventory: part number, manufacturer, lot/batch/serial, quantity, traits, custom item billing attributes
- The Billing interface can be configured to allow case detail changes to be resent.
- Billing can be validated with Patient Registration (ADT) records

## Requisition

The Requisition interface is an outbound (scheduled or on-demand) interface that allows the sending of orders, created in SpaceTRAX, to any enterprise requisition system. The SpaceTRAX user triggers the interface by sending created orders to requisition.



- Base data elements (configurable): part number, manufacturer, custom item key attribute (e.g., Lawson Number), quantity to order, package to order, expected receipt date, PO number, custom order attributes
- The Requisition interface can be configured to allow resending of orders
- Configurable validation of data elements before sending

## Consumption

The Consumption interface is an inbound interface allowing the recording of item usage, done in any other usage capture system, within SpaceTRAX. SpaceTRAX then processes the consumed items as if they were used in a regular case.



- Security requirements: HIPAA, VPN, Data Encryption
- Base data elements (configurable):
  - » Patient: name, MRN, gender, date of birth, status
  - » Case: case number, start date & time, duration, primary physician, room, procedures
- Used Inventory: part number, manufacturer, lot/batch/serial, quantity, custom item consumption attributes

### About STANLEY Healthcare

STANLEY Healthcare provides over 5,000 acute care hospitals and 12,000 long-term care organizations with enterprise solutions that transform safety, security and operational efficiency. The STANLEY Healthcare solution set enables customers to achieve organizational excellence and superior care in five critical areas: Patient Safety, Security & Protection, Environmental Monitoring, Clinical Operations & Workflow and Supply Chain & Asset Management. These solutions are complemented by consulting, training, implementation and integration services. STANLEY Healthcare is proud to be part of Stanley Black & Decker, Inc. For more information, visit [www.StanleyHealthcare.com](http://www.StanleyHealthcare.com).