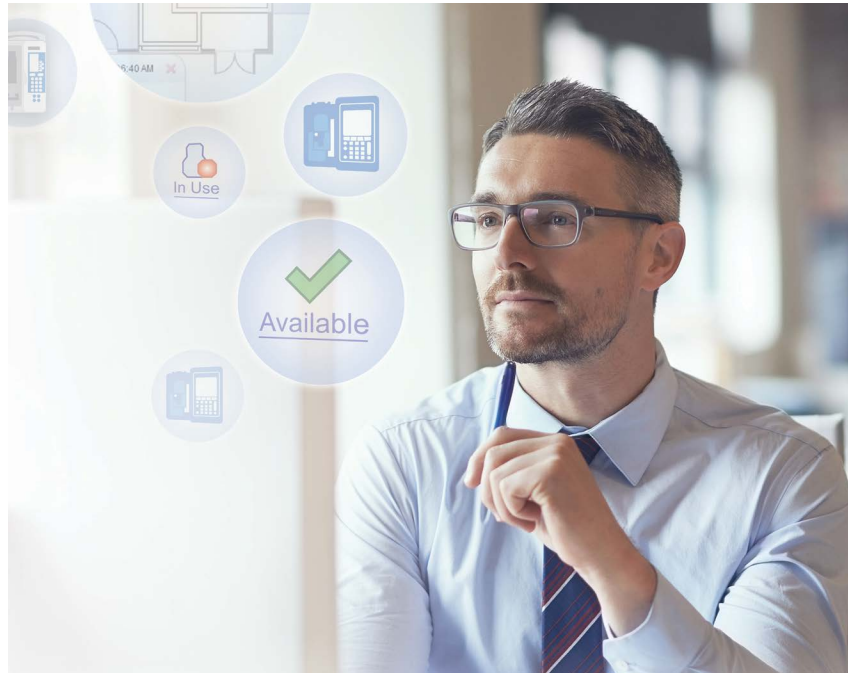


APPLICATION NOTE

# Asset Management with ICU Medical Integration

Manage IV pumps more efficiently

icumedical



## Solution Benefits

- **Integrate ICU Medical MedNet software** with RTLS technology
- **Wirelessly manage** pump fleet
- **Enjoy bi-directional information flow** for greater speed and convenience
- **Gain real-time visibility** to pump location and status
- **Reduce staff search time** and labor costs
- **Increase pump utilization** and validate the fleet is right-sized
- **Achieve better PAR level management**
- **Optimize pump investment** with summary reports
- **Streamline pump management** in key areas:
  - Field actions
  - Preventive maintenance
  - Pump software updates
  - Shrinkage control

## Challenges

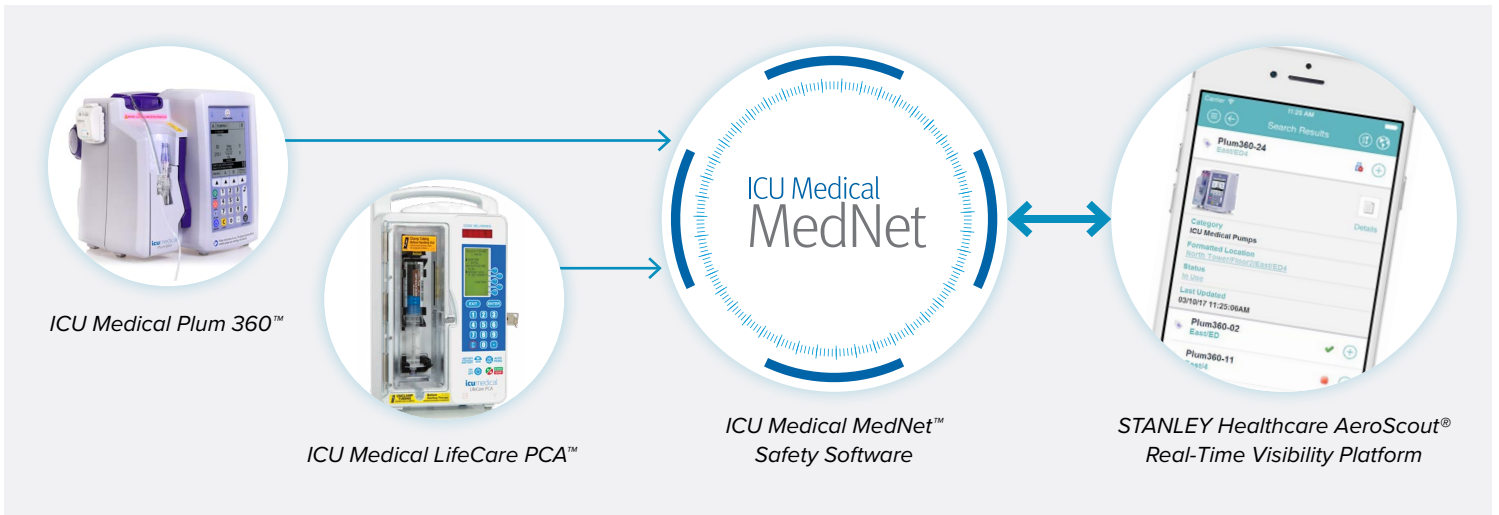
Managing your IV pump fleet can be a challenge, especially when identifying a pump's location and availability for clinical use or maintenance. How much time does your staff spend searching for infusion pumps throughout your facility? Are clinical staff sometimes frustrated with the process for locating clean, patient-ready pumps for care? Meanwhile, do biomedical personnel devote many hours hunting for pumps when it's time to perform preventive maintenance or software updates?

## Solution

By combining your ICU Medical MedNet™ IV safety software with STANLEY Healthcare's AeroScout® Real-Time Location System (RTLS) platform, you gain a bi-directional connection that provides real-time visibility into your IV pumps' location and status for clinical use and maintenance, helping you save time while enhancing overall fleet operation.

## How It Works

An RTLS tag is securely attached to your ICU Medical Plum 360™ and LifeCare PCA™ infusion pumps. The integrated communication network between the STANLEY Healthcare AeroScout platform and ICU Medical MedNet™ Software provides real-time pump location and status information—*In-Use*, *Not-In-Use* or *Standby*—to help efficiently locate pumps for use, maintenance or distribution while bypassing pumps in clinical use. Access to this information is easily viewed in either system for added workflow flexibility and convenience.



## The Value of Integration

Actively used by multiple hospitals, this bi-directional solution provides status and location information of the Plum 360 and LifeCare PCA 7 devices for faster, more efficient pump management.

The integrated solution provides valuable information to streamline biomedical engineering workflows and reduce staff search time and labor costs. Meanwhile, sterile processing professionals can quickly understand what pumps require cleaning and redistribution within a PAR-managed inventory process. And, clinicians can feel confident in their ability to quickly and easily find the nearest available infusion pump for clinical use.



### About STANLEY Healthcare

Over 15,000 hospitals and senior living communities rely on STANLEY Healthcare solutions to empower caregivers to deliver better care. STANLEY Healthcare is a part of Stanley Black & Decker and a proud supporter of the Alzheimer's Association®. Learn more at [stanleyhealthcare.com](http://stanleyhealthcare.com).



### About ICU Medical

ICU Medical connects patients and caregivers through safe, life saving, life enhancing IV therapy products, systems, and services. Since IV therapy is our only business, meeting your IV needs with quality products and consistent supply is our only concern. To learn more, visit [icumed.com](http://icumed.com).