

SOLUTION OVERVIEW

AeroScout[®] Asset Management

Reduce costs and transform management of mobile assets



Solution Benefits

- **Cost savings.** Real-time inventory visibility helps you right-size fleets to reduce new purchases and rentals. Use shrinkage control to save tens of thousand of dollars annually.
- **Caregiver efficiency.** Eliminate the stress of hunting for a needed device—and the hoarding that often results. Slash search times to as little as 2 minutes.
- **Improved patient care.** Ensure critical equipment is available and maintained properly. Retrieve recalled assets within hours—before they're used on a patient.
- **Increased asset utilization.** With total visibility to where and how each asset is used, you can improve asset allocation to maximize utilization and optimize workflows with real-time PAR levels.
- **Endless possibilities and coverage.** One solution that supports a variety of technologies: active RTLS, RAIN RFID, Low Frequency for chokepoint, Ultrasound for room-level accuracy.
- **Unified platform advantage.** Supports scalability, interoperability, analytics, lower cost of ownership and more.

Challenges

Hundreds of hours spent searching for equipment. High-value assets lost, stolen or misplaced. Poor utilization. Unnecessary rentals and purchases. Delays in patient care as caregivers wait for what they need.

Solution

Automates manual processes for managing capital and rental equipment so staff can easily see the location and status of assets in real time. Capture and analyze data about how assets are being used—and apply those insights to make better in-the-moment decisions and long-term improvements. Integrate with CMMS and Infusion Management solutions to extend visibility and deepen understanding of equipment distribution, utilization and allocation.

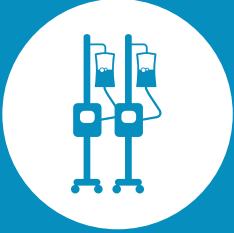
How It Works

Securely attach a tag to valuable equipment for location visibility. Tags communicate wirelessly with the AeroScout visibility and analytics platform. Asset location and status are automatically logged and monitored, using visual controls on PCs or mobile devices to quickly find assets and plan workflows. Configurable, real-time alerts provide notification for any status or location change such as IV pump replenishment requirements, shrinkage alerts, or preventive maintenance needs. Asset data is transformed into powerful reporting and analytics to better understand inventory levels, PAR level performance and asset utilization.

“The AeroScout solutions are so important and easy to use that we made sure everyone at PRMC, including our CEO, has access to the applications.”

**MARK CORNELIUS, BIOMEDICAL DEPARTMENT DIRECTOR
PENINSULA REGIONAL MEDICAL CENTER**

Complete solution for full coverage



TAG



MONITOR



FIND & ALERT



ANALYZE

The Value of Advanced Asset Management

EQUIPMENT LOCATING



REDUCTION in search time

SHRINKAGE CONTROL



SAVED by avoiding equipment loss and replacement costs

PREVENTIVE MAINTENANCE



COMPLETION of monthly pump maintenance in less than a week

RECALL MANAGEMENT



DEVICE REMEDIATION within 5 days for 800 infusion pump fleet

INVENTORY VISIBILITY



INITIALLY SAVED avoiding purchase of more infusion pumps

PAR LEVEL MANAGEMENT



REDUCTION in delays in patient care due to available pumps

RENTAL MANAGEMENT



SAVINGS PER YEAR reducing unnecessary rental of specialty beds

ORDER FULFILLMENT



MORE EFFICIENT fulfillment of equipment and device needs



SOURCE FOR EVERYTHING YOU NEED TO TRANSFORM ASSET MANAGEMENT: HARDWARE, SOFTWARE WITH INTEROPERABILITY, ANALYTICS & MANAGED SERVICES. POWERFUL PLATFORM FOR MULTIPLE RTLS APPLICATIONS. **STANLEY HEALTHCARE.**



About STANLEY Healthcare

Over 15,000 hospitals and senior living communities rely on STANLEY Healthcare solutions to empower caregivers to deliver better care. STANLEY Healthcare is a part of Stanley Black & Decker and a proud supporter of the Alzheimer's Association®. Learn more at stanleyhealthcare.com.