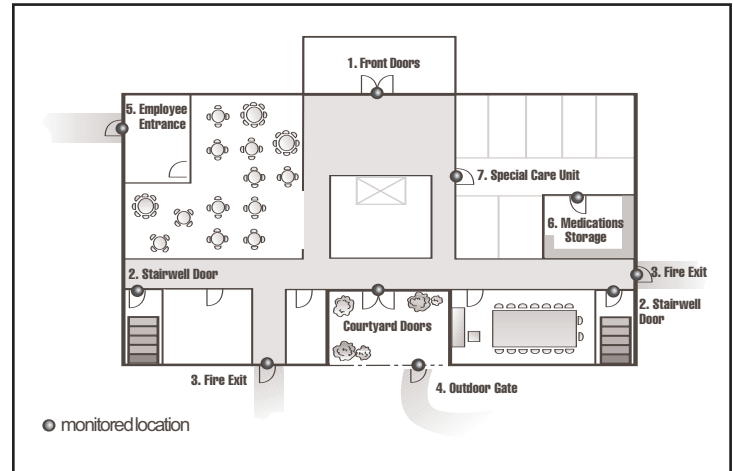


Choosing the Locking System Appropriate for Each Door

The following examples serve as a general guideline for common methods of securing facility doors. Your facility may have doors with specific needs other than those listed here. Contact your Sales Coordinator for recommendations.

1. Main Door – Alzheimer's or Special Care Units:

The main entrance to a facility or special care unit (7) wing typically has the most traffic. A selective locking system using the WanderGuard departure alert system combined with WanderGuard delayed egress locks allows staff and visitors to come and go at will while keeping residents wearing a signaling device safe in the facility. A keypad on the special care unit side and a pushbutton on the other side will allow staff to bypass the lock when necessary. The addition of a digital timer allows the doors to be programmed for day and night modes of operation.



2. **Stairwell Door** – Because of the potential danger stairwells can present to wandering residents, a WanderGuard delayed egress lock, which remains engaged at all times, may be best suited for this application. A combination of programmable keypads and push buttons can be used to help prevent unauthorized exits and entrances.
3. **Fire Exit** – A WanderGuard delayed egress lock enables locking of fire exit doors. The addition of indoor and outdoor keypads provide safety and accessibility for authorized staff.
4. **Outside Gate** – During nice weather, your residents may enjoy spending time in a fenced courtyard. Our weather resistant gate lock can be installed on sturdy metal or wooden gates to help prevent someone slipping out, unnoticed. The addition of two outdoor keypads provide safety for residents while allowing authorized staff to come and go at will.
5. **Employee Entrance** – Often, this door is hidden at the back of the facility, so usability and quick response to the door is not always possible. A WanderGuard delayed egress lock can delay a wanderer at the door, allowing staff time to respond. The addition of a WanderGuard remote annunciator enables notification staff at the nurse's station where door alarms cannot be easily heard. The addition of indoor and outdoor keypads provide safety and accessibility for authorized staff.
6. **Medications Storage** – A standard magnetic lock with a programmable keypad bypass will allow only authorized staff to enter a secured area. A pushbutton bypass can be placed on the inside for easy exit from the room.

All locks must be approved by the authority having jurisdiction.

Healthcare Solutions

Toll-Free: 800-824-4478

Office: 402-475-4002

Fax: 402-475-4281

Website: www.seniortechnologies.com