

SOLUTION OVERVIEW

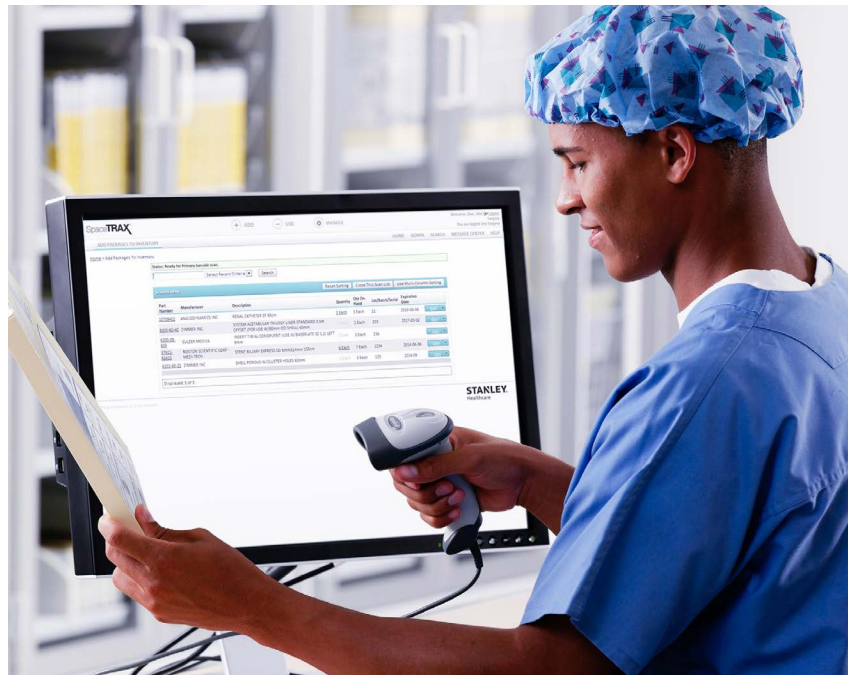
# SpaceTRAX<sup>®</sup> Inventory Management

Reduce costs, optimize inventory and improve patient care

**SpaceTRAX<sup>®</sup>**

## Solution Benefits

- **Promotes clinical efficiency.** SpaceTRAX makes life easy for clinical users at the point of use and for staff managing departmental inventory—automatically capturing key information for case management, including supplies, patient, staff and clinical attributes.
- **Robust, accurate database.** SpaceTRAX's global item database is continually updated in a consistent nomenclature by clinical experts.
- **Flexible reporting.** Roll-up reporting for multiple departments in multiple hospitals. No other system provides the instant department and facility roll-up.
- **No capital costs.** The solution is an entirely web-based SaaS application that requires no capital investment and minimal IT involvement. You can be up and running with the system over a long weekend with our streamlined implementation process. SpaceTRAX works with all existing storage units; no need to replace carts, cabinets, and existing storage unless there is a need.



## Challenges

Inefficient manual processes that hinder real-time visibility into supplies and how they're being utilized. Overstocking of items leads to items expiring on the shelf. Items missed on a procedure result in lost/missed charges. Unnecessary carrying costs associated with "just-in-case" purchases and zero-use items.

## Solution

SpaceTRAX is a real-time point-of-use inventory management solution that provides visibility into what's expiring and when, what needs to be re-ordered and when, and utilization by physician, patient and procedure.

## How It Works

SpaceTRAX keeps track of lot, batch, serial number and expiration for every item in a Unique Device Identification (UDI) compatible format. Simply scan the barcode and SpaceTRAX captures all the relevant information. With standard interfaces to the hospital's EMR it can send item charges directly to the billing system. Automating the supply chain process puts an end to manually keying items to be ordered. Automatic alerts flag when items are approaching expiration and if an expired or recalled product is scanned for use in a procedure.

*"We are able to consistently report less than 1% variances in cath lab and open-heart inventory."*

**TIM CREAR**  
**SUPPLY MANAGER**  
**UNITYPOINT METHODIST HOSPITAL**



## Why SpaceTRAX?

1. No capital costs.
2. Rapid deployment.
3. Integration: Use SpaceTRAX anywhere you have an Internet connection. Standard interfaces are included for billing, purchasing, and patient information.
4. Increased ROI: Optimize inventory levels. Eliminate losses due to expired products. Eliminate guesstimating and oversupplying. Increase charge capture.

### SpaceTRAX customers see returns within the first 6 months

**5% - 10%**

**REDUCTION**  
OF ON-HAND  
INVENTORY

**10% - 30%**

**REDUCTION**  
OF LABOR COST TO  
MANAGE INVENTORY

**50% - 100%**

**REDUCTION**  
IN EXPIRED  
ITEM COST

**1-3%**

**INCREASE**  
IN VENDOR  
DISCOUNTS



**STANLEY**  
Healthcare

#### About STANLEY Healthcare

Over 15,000 hospitals and senior living communities rely on STANLEY Healthcare solutions to empower caregivers to deliver better care. STANLEY Healthcare is a part of Stanley Black & Decker and a proud supporter of the Alzheimer's Association®. Learn more at [stanleyhealthcare.com](http://stanleyhealthcare.com).