

SOLUTION OVERVIEW

SpaceTRAX[®] Plus RFID

Optimize inventory, increase charge capture, and automate chain of custody

SpaceTRAX[®]

Solution Benefits

- **Improve visibility.**
SpaceTRAX Plus RFID tells you what inventory you have—and exactly where you can find tagged assets.
- **Increase charge capture.**
With standard interfaces to your EMR, SpaceTRAX sends item charge information directly to the billing system. The smart cabinet further accelerates charge capture.
- **Address compliance.**
Automate chain-of-custody tracking and temperature monitoring in sterile processing and storage areas.
- **Enhance security.**
Keep high-value assets secure to reduce replacement costs and help ensure access to supplies when and where they're needed for patient care.



Challenges

Every day, healthcare organizations manage inventories of high-dollar equipment and supplies. These assets need to be maintained, monitored and tracked, and available when needed to support patient care. Relying on manual inventory management is time consuming, inefficient and error prone.

Solution

STANLEY Healthcare has a solution: SpaceTRAX Plus RFID. SpaceTRAX is a real-time point-of-use inventory management solution that seamlessly links clinical supplies to physicians, patients and procedures. SpaceTRAX Plus RFID adds smart cabinets and RFID tags to further improve speed and accuracy of inventory management and charge capture while delivering full chain-of-custody data.

How It Works

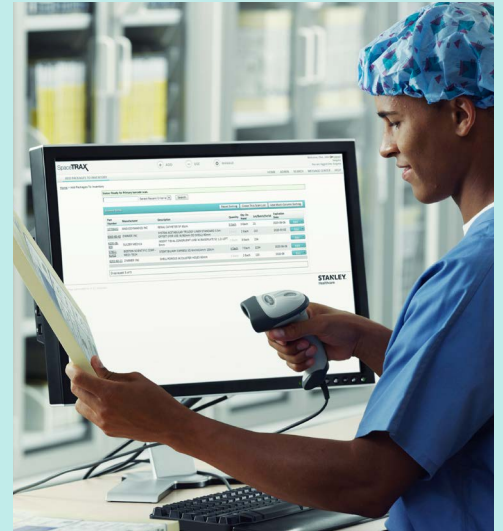
SpaceTRAX uses manufacturer's barcodes to capture all key data: each item's part number, description, expiration date, as well as lot and serial numbers. With SpaceTRAX Plus RFID, you can tag high dollar/high priority items with passive UHF tags to track their location and usage with unprecedented speed and ease. The smart cabinet also offers flexible options—including wireless and cellular connectivity and various sizes.

Innovation That Counts

SpaceTRAX Plus RFID offers the flexibility of a hybrid approach:

- Track high-value/high-priority inventory via passive RFID tags.
- Manage lower-value supplies with traditional barcode scanning.

The hybrid approach provides end-to-end visibility—including the full chain of custody required for tissue tracking.



Key Features of SpaceTRAX Plus RFID

Flexibility

Choose the smart storage configuration to meet your needs

Visibility

Prevent stock-outs by monitoring product expiration dates

Safety

Perform remote temperature monitoring to address compliance requirements and patient safety goals

Efficiency

Create fast, efficient workflows supported by the SpaceTRAX database of nearly 300,000 items

Interoperability

Integrate with your EMR, billing and other key clinical and administrative systems

Affordability

Pay a predictable monthly service fee that includes 24/7/365 support, updates, maintenance and more



About STANLEY Healthcare

Over 15,000 hospitals and senior living communities rely on STANLEY Healthcare solutions to empower caregivers to deliver better care. STANLEY Healthcare is a part of Stanley Black & Decker and a proud supporter of the Alzheimer's Association®. Learn more at stanleyhealthcare.com.